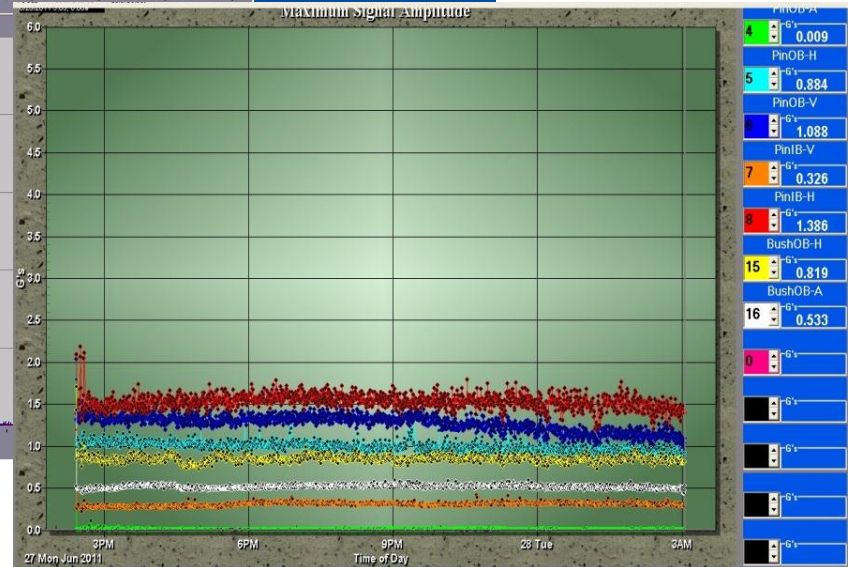
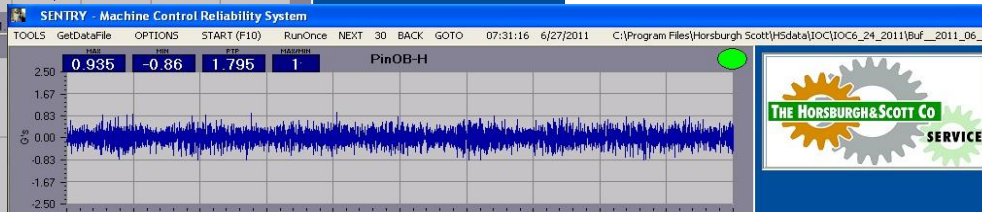
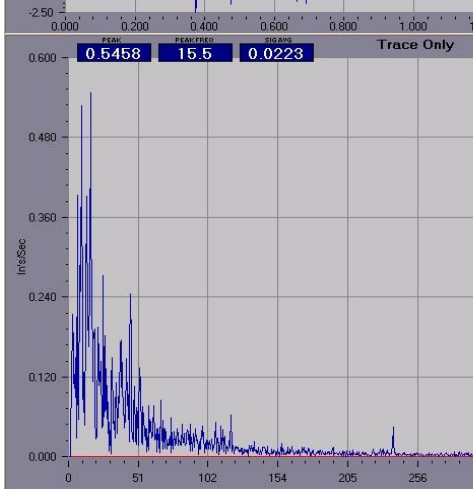
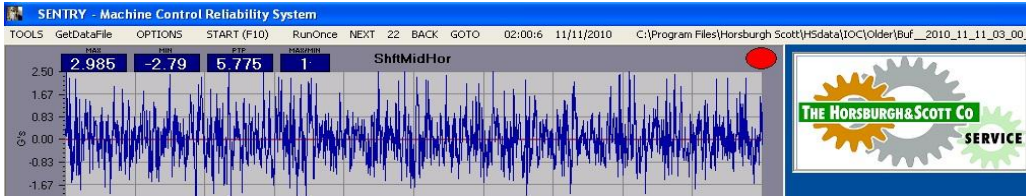


Compared 'Before' and 'After' to ensure Corrective Action repair Success.
(Significantly lowered the vibration).



Before Rebuild:
Vibration at Pinion
Out Board Bearing
in Horizontal
Direction

After Rebuild:
Vibration at Pinion
Out Board Bearing in
Horizontal Direction

Vibration Trends AFTER Rebuild:
Low & Stable



Investments, Cost/Benefit analysis

- \$150K investment: Condition Assessment efforts (Engineering Services Labor).
- \$700K investment: new/re-mfg. components and labor.
- ROI: Much higher reliability >> \$5 M/year of increased Uptime (\$1 invested >>5\$ of Return)
- Previous \$22.5 M of Downtime NOT repeated.

